

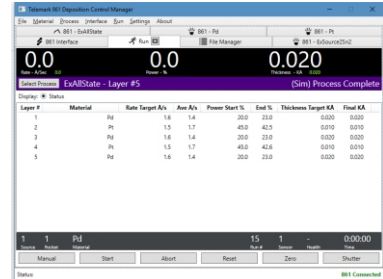
## Deposition Monitors and Controllers



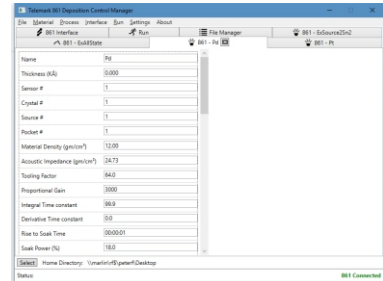
### Model 861 Deposition Controller

Part Number 861-9910-1

- Includes one oscillator, 6 inch BNC cable and 25 foot shielded RJ45 cable for connecting the oscillator to the instrument and RS-232.
- High frequency internal reference oscillator provides <0.01A resolution for aluminum
- Operates with 5 MHz or 6 MHz crystals
- Extensive materials library, also allowing for user definable materials
- Color LCD touch screen for graphical and numerical display of primary real-time process data, providing an intuitive and user friendly operator interface
- All system, film and setup files may be saved via a front panel USB port, as well as uploaded to instrument
- Can accommodate up to 99 processes of 999 layers each
- Standard unit has 2 crystal sensor inputs and 2 isolated rate control analog output drivers, expandable to 4 each.
- Standard 8 relay isolated outputs and 8 optically isolated inputs (for both active and passive mode) Optional up to 32 ea.



Included Windows Software for RS-232 or Ethernet



### Model 862 Deposition Controller

Part Number 862-9910-1

Same features as the 861 but in a chassis with 7-inch touchscreen and capabilities to control co-deposition, average up to 4 sensors simultaneously

### Model 851 Thickness Monitor

Part Number 851-9911-1

The 851 is capable of supporting two sensors sequentially, includes I/O and RS-232, oscillator and 25 foot cable for connecting the oscillator to the instrument. Come with both ears for half rack mounting and table top legs that tilt screen upwards.



# TELEMARK

## Model 861 Deposition Systems



### 861/862 Deposition Systems include:

- 861 or 862 Deposition Controller
- Oscillator, Sensor(s)
- Feedthrough
- 30" in-vacuum coax cable(s),
- 6" coax cable
- 25 foot oscillator to 861/862 cable
- Controller power cable
- RS-232 cable
- 8 outputs, 8 inputs
- Remote Power Handset
- USB drive
- Ten 6MHz Gold Coated Crystals

## Model 861 Deposition Systems

### Deposition System #1

#### Complete 861 System with Single Non-Bakable Sensor with Ultra Torr Fittings

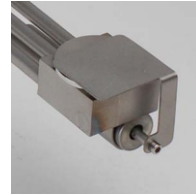
- 861-9910-6112 Parallel Sensor and 1" Feedthrough
- 861-9910-6113 Parallel Sensor and 1.25" Feedthrough
- 861-9910-6132 Right Angle Sensor and 1" Feedthrough
- 861-9910-6133 Right Angle Sensor and 1.25" Feedthrough



### Deposition System #2

#### Complete 861 System with Single Non-Bakable Sensor with Shutter & Ultra Torr Fittings

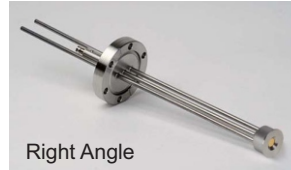
- 861-9910-6122 Parallel Sensor and 1" Feedthrough
- 861-9910-6123 Parallel Sensor and 1.25" Feedthrough



### Deposition System #3

#### Complete 861 System with Single Bakable Sensor

- 861-9910-6014 Parallel Sensor on 2-3/4" CF Flange
- 861-9910-6034 Right Angle Sensor on 2-3/4" CF Flange



### Deposition System #4

#### Complete 861 System with Dual Non-Bakable Sensor with Shutter and Ultra Torr Fittings

- 861-9910-6212 Parallel Sensor and 1" Feedthrough
- 861-9910-6213 Parallel Sensor and 1.25" Feedthrough
- 861-9910-6222 Right Angle Sensor and 1" Feedthrough
- 861-9910-6223 Right Angle Sensor and 1.25" Feedthrough



### Deposition System #5

#### Complete 861 System with Dual Bakable Sensor with Shutter

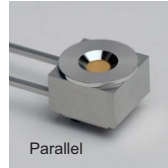
- 861-9910-6034 Parallel Sensor on 2-3/4" CF Flange



## Deposition Systems Parts and Accessories

### Non-Bakable Sensors

- 880-3110-1 Single parallel sensor
- 880-3120-1 Single parallel sensor with shutter
- 880-3130-1 Single right angle sensor
- 880-3210-1 Dual parallel sensor w/shutter
- 880-3220-1 Dual right angle sensor w/shutter



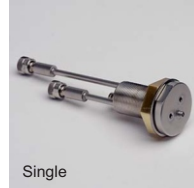
### Bakable Sensors

- 880-3010-1 Single Parallel Sensor
- 880-3020-1 Single Right Angle Sensor
- 880-3030-1 Dual Parallel Sensor with Shutter



### Feedthroughs

- 880-2100-2 Single 1" Feedthru, UT
- 880-2301-0 Single 1.25" (32mm) Feedthru, UT
- 880-2100-4 Single 1" Feedthru, UT (shutter)
- 880-2100-5 Dual 1" Feedthru, UT

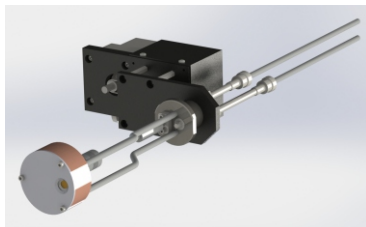


### Crystals

- 880-0201-3 6MHz gold coated sensing crystals (Disc of 10)
- 880-0202-3 6MHz aluminum alloy sensing crystals (Disc of 10)
- 880-0203-3 5MHz gold coated sensing crystals (Disc of 10)
- 880-0205-3 6MHz silver coated sensing crystals (Disc of 10)



### Six Crystal Rotary Sensor



#### FEATURES

- **Compact Design**
- **Flexible Installation**
- **Simple Maintenance**
- **Optional Crystal Controller**

