

ProLab 4000: now add Conductivity...

ProLab 4000: Advanced pH/ION/Conductivity meter

pH, ISE and conductivity in one sophisticated meter

▶ The ProLab 3000 - taken to the next level

The ProLab 4000 offers the high-quality measurement technology similar to the ProLab 3000 with the addition of conductivity measurement capability: Measurement range from 0.000 $\mu\text{S}/\text{cm}$ to 2000 mS/cm , TDS and salinity measurement as well as various functions for temperature compensation and selectable cell constant set the standard for performance. The ProLab 4000 offers even more ...

▶ Special functions for determine the dependency of conductivity with regard to temperature or concentration

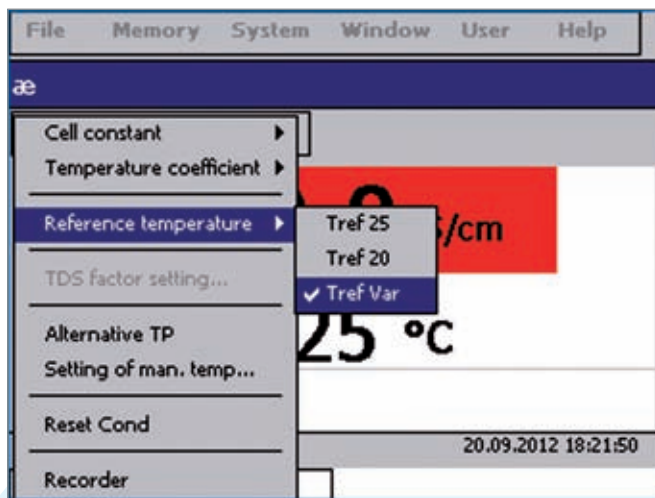
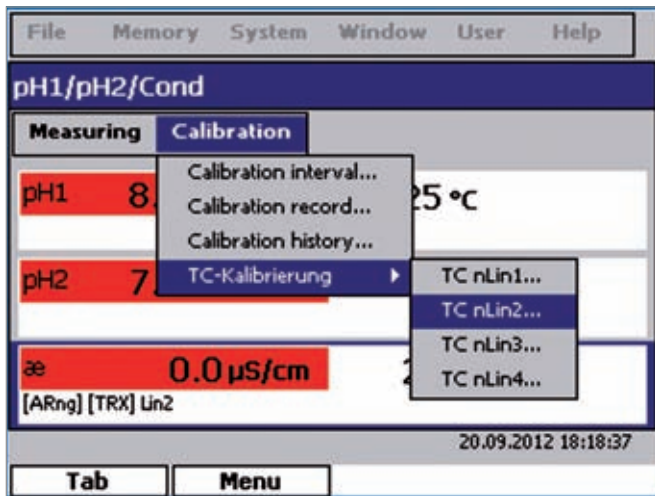
The conductivity of aqueous solutions effected by to temperature and concentration of dissolved substances. For comparing measurement values, which were determined at different temperatures, all values have to be recalculated to the same reference temperature. Both common procedures linear and non-linear compensation (acc. to EN 27888) should only be applied with diluted solutions, otherwise the

concentration dependency can be masked. Furthermore, the measurement temperature range should be within $\pm 10^\circ\text{C}$ of the reference temperature. The ProLab 4000 eliminates these issues thanks to special compensation procedures, for example:

- Use of two pre-programmed temperature coefficients for HCl, NaOH, NaCl and KCl for a temperature range of 0 to 40°C
- Possibility of entering literature values for two temperature coefficients for additional solutions.
- Determination of temperature coefficients by:
 - Setting the temperature range and intervals
 - Measurement of one or multiple solutions of known and even unknown concentrations (through equidistant dilution).

ProLab 4000 is therefore ideally suited for research and for monitoring industrial processes. The instrument enables high precision conductivity measurements in a wide temperature and concentration ranges.





▲ New: Control a burette

Accurate and convenient dosing of ISE/TISAB solutions or standards with the ProLab 4000 in ISE measuring mode by controlling TITRONIC® *universal/110plus/500* burettes.

- ▲ pH, mV, ISE measurement
- ▲ Conductivity measurement
 - Determine the dependency of temperature and concentration through
 - using a temperature coefficient (stored value or entry of own literature values)
 - Self-determination of temperature coefficients in various standards of known or unknown concentrations in a self-defined temperature range and span
- ▲ Highest safety level with measurements and calibration through:
 - automatic user identification with electronic ID card through transponder technology with password entry
 - wireless sensor recognition ID electrodes and measuring instrument with automatic identification and data exchange
- ▲ Operation via mouse or keyboard as at a PC familiar menu structures and clear menu navigation
- ▲ Plug and play technology
- ▲ Instrument kits
 - Instrument (incl. mouse)
 - Electrodes with integrated temperature sensor
 - Buffer- and conductivity test solutions
 - Stand
 - Universal power supply
 - Cover

Advantages
ProLab 4000